

**ÖZKARTALLAR CAMPAK JOINT VENTURE**

*Sikandriya workshop 2*



**Solid Waste Management  
Plan For  
Rizwan Park  
(UC-91)**

*By*

*Muhammad Noman*

*Deputy Manager Operations*

**Özkartallar Campak Joint Venture  
Sikandriya workshop 2**

**Contents**

.....	0
<b>1. Facts</b> .....	2
<b>2. Operational Arrangements / Resources Deployed</b> .....	2
2.1 1 <sup>st</sup> Shift Arrangement – 6 AM to 2 PM.....	2
2.2 2 <sup>nd</sup> Shift Arrangement - 2 PM to 10 PM.....	3
<b>3 Introduction</b> .....	Error! Bookmark not defined.
<b>4 Solid Waste Generation</b> .....	Error! Bookmark not defined.
<b>5 Solid Waste Management Practices</b> .....	Error! Bookmark not defined.
<b>6 Street Sweeping and Waste Collection by Sanitary Workers</b> .....	Error! Bookmark not defined.
6.1 Team Division .....	Error! Bookmark not defined.
<b>7 Solid Waste Storage</b> .....	Error! Bookmark not defined.
7.1 Waste Storage Facility.....	Error! Bookmark not defined.
7.2 Existing Points of Containers.....	4
<b>Existing Points of Containers</b> .....	5
<b>8 Solid Waste Collection &amp; Transportation</b> .....	6
8.1 Route for Compactor .....	Error! Bookmark not defined.
8.2 Staff Deployment for Compactor Vehicle .....	6
<b>9 Door To Door Waste Collection</b> .....	7
9.1 System for D-T-D Waste Collection .....	7
<b>10 2nd Shift Operational Arrangement</b> .....	9
<b>11 Problematic Areas</b> .....	9
<b>12 Open plots</b> .....	10
<b>13 Public Awareness</b> .....	11

**Özkartallar Campak Joint Venture**  
**Sikandriya workshop 2**

**1. Facts**

SR.N	Description	
1	Phase	B
2	UC	91 – Rizwan Park
3	Area Deputy Manager	Muhammad Noman
4	Zonal Officer LWMC	Muzammil Butt
5	Population	60716
6	UC Area	689839 m <sup>2</sup> (middle income)
7	Waste Generation (estimated)	39.46 tons/day

**2. Operational Arrangements / Resources Deployed**

2.1 1<sup>st</sup> Shift Arrangement – 6 AM to 2 PM

<b>Manual Sweeping</b>		
Sanitary Supervisors	2	
Sanitary Workers	32	
Wheelie Bins	5	
Hand Carts	23	
<b>Special Gang</b>		
Sanitary Workers	17	
Sanitary Supervisor	1	
Note: Special Gang solely on Deputy manager / ZO's disposal to attend important complaints and to work for absent workers beats of the day		
<b>Containers Collection</b>		
Containers Placed	35	2 trip, approx. 4 to 6 tons each
Containers Points	12	
Compactors	C7-1106	
Drivers	1	
Helpers	2	
<b>D-T-D Collection</b>		
Mini Dumpers – Suzuki Pickup	1	MD-61
Driver	1	
Helper	1	
Note: Compactor also collecting waste if waste bags found on road or in front of home or shop		

**Özkartallar Campak Joint Venture**  
**Sikandriya workshop 2**

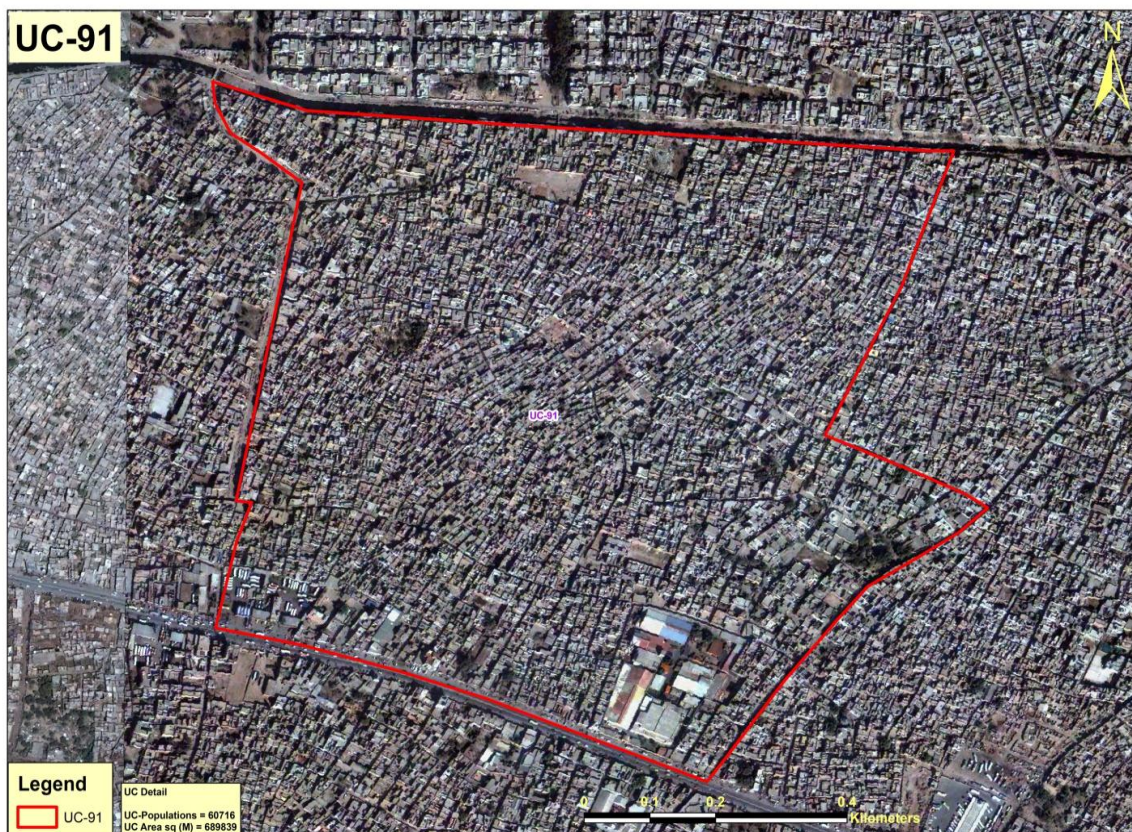
2.2 2<sup>nd</sup> Shift Arrangement - 2 PM to 10 PM

Manual Sweeping - Special Gang		
Shift In-charge	1	
Sanitary Workers	28	
Note: for taking care of whole Zone-18, attending major roads, markets, 1139 complaints and to coordinate compactors and ensure containers collection.		
Containers Collection		
Compactors	1	C-1130, 2 trip (approx. 8 to 10 tons)
Note: attending 2 UC's 91 & 92		

**3 Introduction**

Union Council – 91 (Rizwan Park) is located in Samanabad Town. Total area of the UC is 689839 m<sup>2</sup> with population of 60716<sup>1</sup>. This area is predominantly middle income area with planned settlement.

Figure 1: Map of UC 91



<sup>1</sup> Punjab Development Statistics – 2011, Bureau of Statistics, Govt. of the Punjab

**Özkartallar Campak Joint Venture**  
**Sikandriya workshop 2**

#### **4 Solid Waste Generation**

Estimated solid waste generation is 39.46 tons per day @ waste generation rate of 0.65 kg/person/day.

#### **5 Solid Waste Management Practices**

This area is under control of M/s. OZPak J.V for solid waste management. Existing arrangements for SWM based upon actual operations are as follows:

#### **6 Street Sweeping and Waste Collection by Sanitary Workers**

##### **6.1 Team Division**

Teams are divided according to equivalent sweeping length of the area.

- Solid waste is collected by sanitary workers from streets & households and hauled to container by wheelie bins / hand carts.
- Waste bags also used for roads sweeping

#### **7 Solid Waste Storage**

##### **7.1 Waste Storage Facility**

- Currently 35 waste storage containers are placed at 12 different points.
- Storage capacity is 08 tons in one time lifting
- Lifting is operational in 2 times

##### **7.2 Existing Points of Containers**

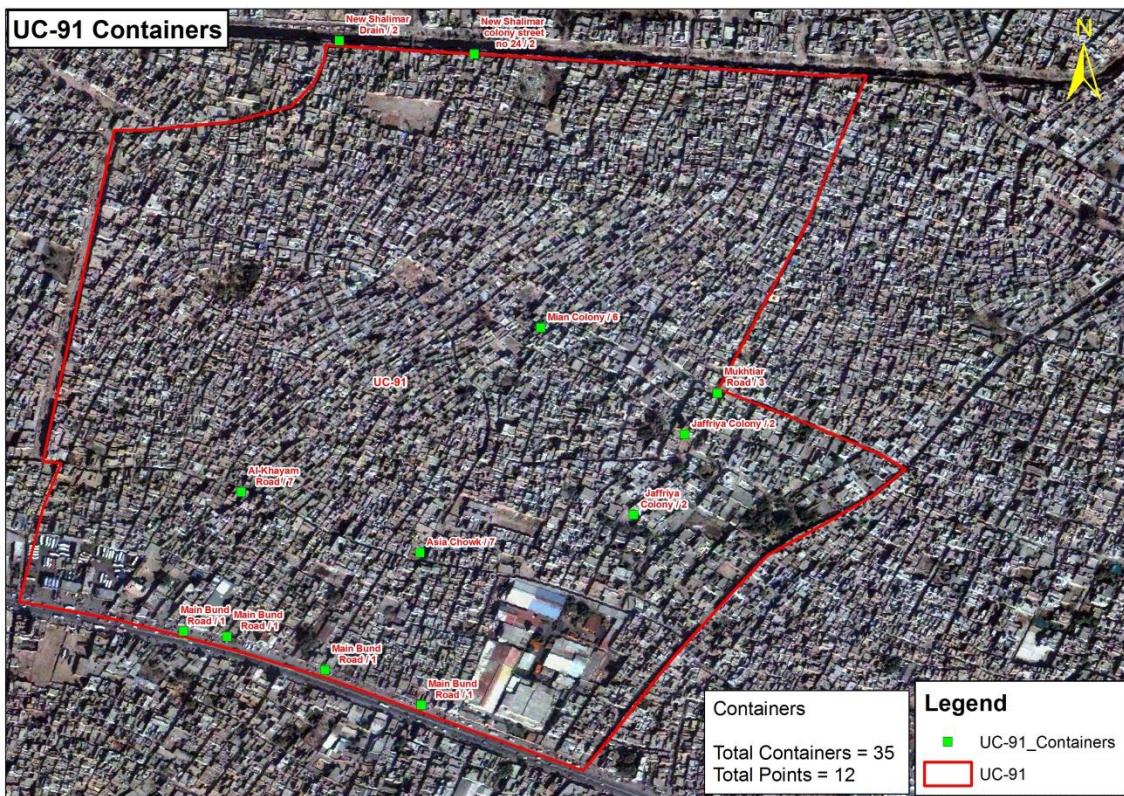
Sr. No.	Container Location	No. of Containers
1	Firsh taal wali gali, ganda nallah	2
2	Taal vali gali to 30 # street, ganda nallah	2
3	30 # street ganda nallah to Mukhtaar road	3
4	Mukhtar road to jafria colony	2
5	Jafria colony	2
6	Jafria colony to Mian colony	5



**Özkartallar Campak Joint Venture  
Sikandriya workshop 2**

7	Mian colony to Asia chowk	8
8	Asia chowk to Alahyam road	7
9	Alahyam road to band road, foji galeyan	1
10	Band road foji galeyan to Sadeeque chay vala band road	1
11	Sadeeque chay vala band road to Aary vali gali band road	1
12	Aary vali gali to shezan factory band road	1
	<b>Total containers</b>	<b>35</b>

Existing Points of Containers



**Özkartallar Campak Joint Venture**  
**Sikandriya workshop 2**

**8 Solid Waste Collection & Transportation**

**8.1 Staff Deployment for Compactor Vehicle**

Conservancy Staff Zone-18															
Muhammad Noman (0300-5001056)															
Supervisor = Ijaz-u-Din (0321-4243018 , 0312-7557534)				Supervisor = Ali			Supervisor =								
1st shift				2nd shift			3rd shift								
UC	Compactor	Driver Name & Mobile	Helpers	Vehicle No.	Driver Name & Mobile	Helpers	Vehicle No.	Name of Driver & Mobile	Helpers						
84	1017	Qaiser Masih (03014141911)	Riaz	1021 All Uc's	Ishfaq	Aslam									
			Rafique			Nazir									
87	1046	M. Yousaf (0321-4563896)	Khawar												
			Shamoon			Nadeem									
	1059	Javed (0324-4706079)	Safdar												
			Arif												
88	1112	Imanual (0306-6049554)	Bashir			1112 All Uc's				Chana Masih (0324-4929902)	Nil				
			Arif								Nil				
89	1038	Malik Murtaza (0333-4800363)	Naeem												
			Imran								Nil				
90	1035	Irfan Sultan (03224133648)	Robin				Nil								
			Karamat												
91	1106	M. Tufail (0300-8134441)	Yousaf	1130 All Uc's	Asad Sindho (03134429902)		Nil								
			Latit												
92	1022	Akbar (0300-4287854)	Abbas												
			Sharfat												
All UC's Main Roads	1130	Tariq Ali	James			1093				Imran Altaf		Riaz			
			Allaudin									Sadiq			
	1070	Francies (0323-4719055)	Rafique												
			Pervaiz												
Extra Vehicles	1093														
	1021											Jeera Jalal			

**Özkartallar Campak Joint Venture**  
**Sikandriya workshop 2**

Extra Drivers	Shafiq Tahir	Extra Drivers	SunnyAnwar				
	Asif Munir						

## 9 Door To Door Waste Collection

### 9.1 System for D-T-D Waste Collection

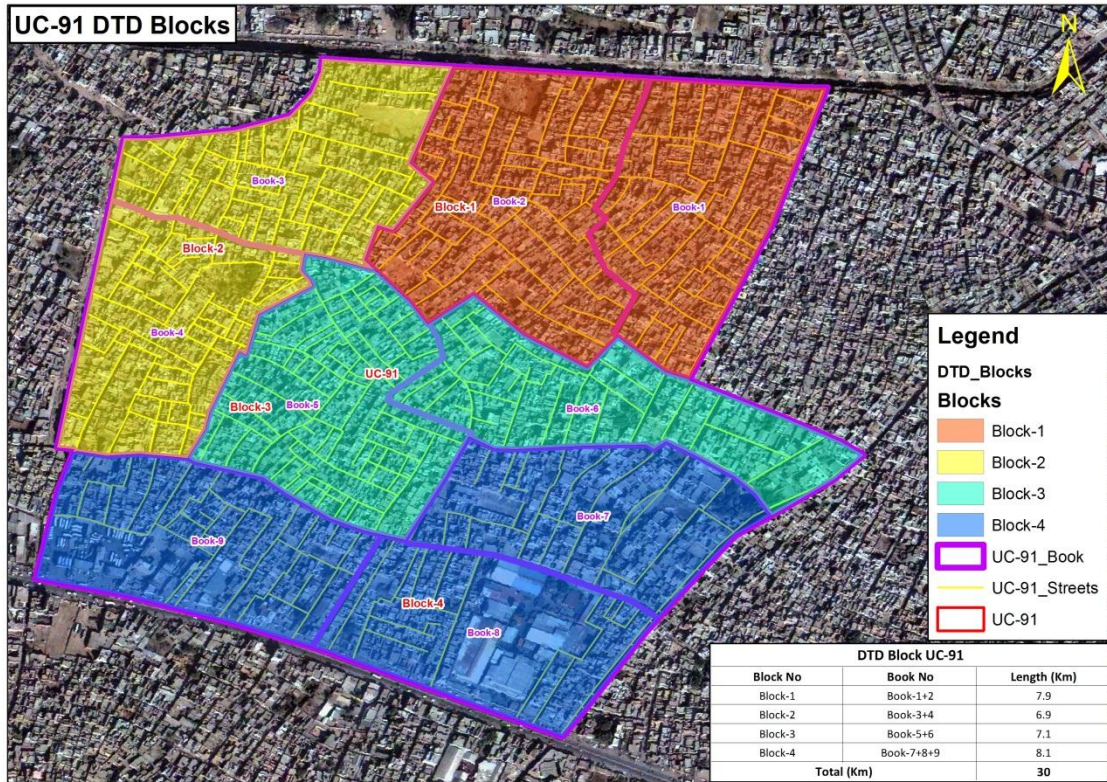
- 1 Pickup for door to door waste collection
- Waste collected by pickup will be unloaded into nearby Compactor or transfer station.
- Compactors are also collecting waste if found in waste bags on road or in front of home or shop

Block	Major Areas/ Mohalla's	Timings
Block 1	Ganda Nallah	8:00 am to 11:00 am
	New Shalimar colony	
	Rizwan Park	
Block 2	60 feet road	11:00 am to 12:00 pm
	Ganda nallah	
	Mohra shareef darbar	
Block 3	Mian colony	12:00 pm to 1:00 pm
	Jafriya colony	
	Mukhtar road	
Block 4	Shezan factory	1:00 pm to 2:00 pm
	Qader pura bazar	
	Band road	

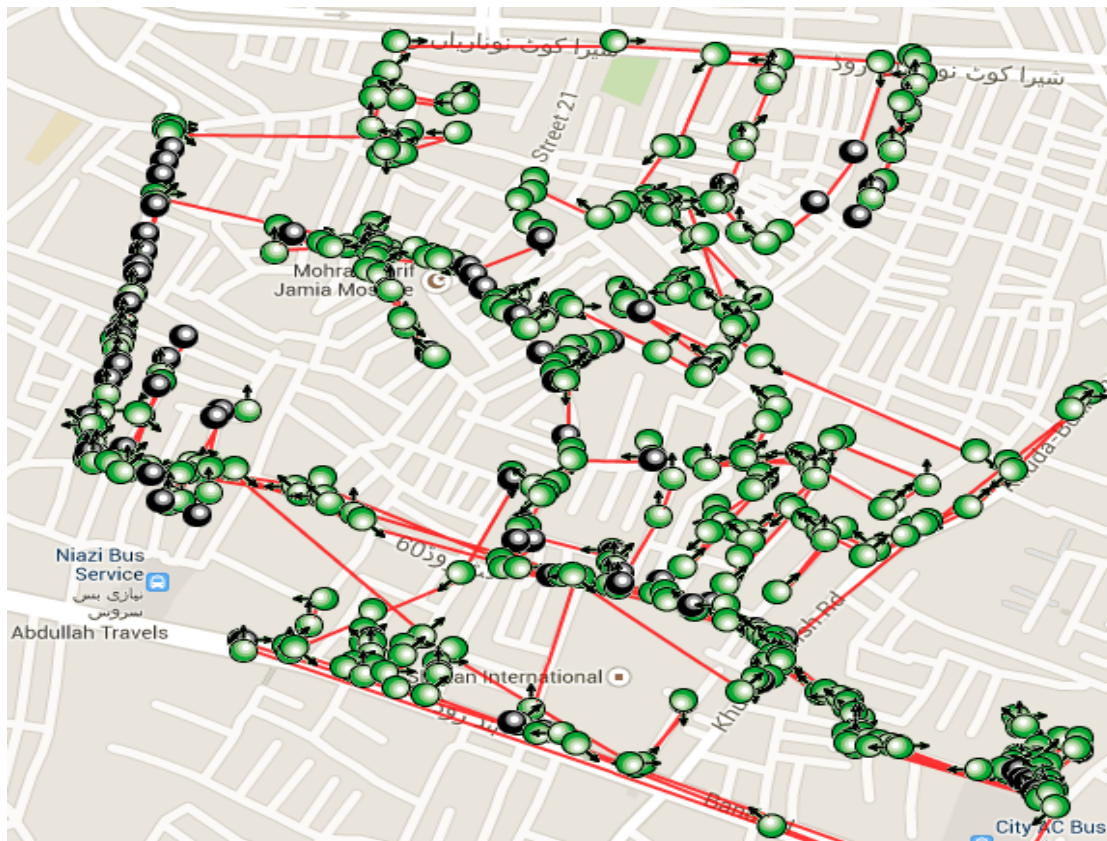


# Özcartallar Campak Joint Venture Sikandriya workshop 2

## DTD Blocks Map



## DTD ROUTE MAP



**Özkartallar Campak Joint Venture**  
**Sikandriya workshop 2**

**10 2nd Shift Operational Arrangement**

Manual Sweeping - Special Gang		
Shift In-charge	1	
Sanitary Workers	28	
Note: for taking care of whole Zone-18, attending major roads, markets, 1139 complaints and to coordinate compactors and ensure containers collection.		
Containers Collection		
Compactors	1	C-1130, 2 trip (approx. 8 to 10 tons)
Note: attending 2 UC's 91 & 92		

**Major Areas**

- Shezan factory
- 60 feet road
- Ganda Nallah
- Jafriya colony
- Band road

**11 Problematic Areas**

**Mohra shareef darbar link streets**

Mohra Shareef darbar area is one of main problematic area of UC 91 due to very narrow streets which have no vehicle excess and bad behavior of the residents towards waste.

**Observations:**

- Narrow streets
- WASA sludge
- Littering on ganda Nallah portion

**Recommendations:**

- Proper lifting of open waste heaps.
- 2 times sweepings in most inner streets.
- Proper sweeping and scrapping on daily basis.
- Manual clearance of open plots.



## Özkartallar Campak Joint Venture Sikandriya workshop 2

### 12 Open Plots:

Almost in all UC's of zone open plots are exist. These open plots are major hurdle in cleaning operation. To maintain the cleaning of open plots is quiet hard because of the immature attitude of residence and walking people (non-residence).

Solid waste types:

Different solid waste types are observed in these open plots.

- Inorganic
- Organic
- C & D waste
- Green Waste



Measurements:

To maintain the cleaning of open plots an operational strategy has been developed and also door to door waste collection has been focused more to make open plots cleaning operation more effective.

Group activity:

15-20 people group activity has arranged on regular basis to cover-up the cleaning of open plots.... Machinery is also used to clean up where an open plot cannot be handled with manual sweeping.

**Özkartallar Campak Joint Venture**  
**Sikandriya workshop 2**

**13 Public Awareness**

- Distribution of leaflets along-with bags distribution has been done as per contract.
- Announcement of waste collection when pickup will move in the area
- Involvement of public representatives in mass awareness campaign